



Serene Meadows, Nasik



**Regd. Office:**

301 A, 3rd Floor, Silver Pearl, Waterfield Road, Bandra (W). Mumbai - 400 050.  
Tel: 022 2643 0620 / 98202 49953

**Site Office:**

47/2 Serene Meadows, Anandvali, Gangapur Road, Nasik - 422005.  
Tel: 088790 86238

Email: [info@zarahabitats.com](mailto:info@zarahabitats.com) • Web: [www.zarahabitats.com](http://www.zarahabitats.com)

All plans, drawings, amenities, other information, etc. in the brochure are indicative of the kind of development that is proposed and are subject to the approval of the respective authorities. All renderings, floor plans, pictures, perspective views of buildings, interiors and maps are the artist conceptions and not actual buildings, walls, roadways or landscaping. The developers reserve the right to make changes or alterations at their sole discretion without prior notice or obligation. The list of team members is only indicative and not limited to the same, the actual team shall vary for each project depending on various factors and advantages.



# Palazzo

## **WELCOME TO THE NEW GENERATION OF HOMES - SMART SIZED HOMES.**

Palazzo seamlessly combines the best of Smart-Sized spaces and amenities necessary for a modern lifestyle. Being strategically located and intricately planned, Palazzo homes exude elegance and an unmatched charm.

Palazzo offers an incomparable living experience for those who seek the ultimate in style and luxury.

## **SERENE MEADOWS - THE MOST SOUGHT AFTER ADDRESS FOR NASIK'S ELITE.**

Palazzo is your opportunity to own a Landmark within Serene Meadows, Nasik's highly desired location.

Welcome to Palazzo. Be greeted with the finest privileges of life!

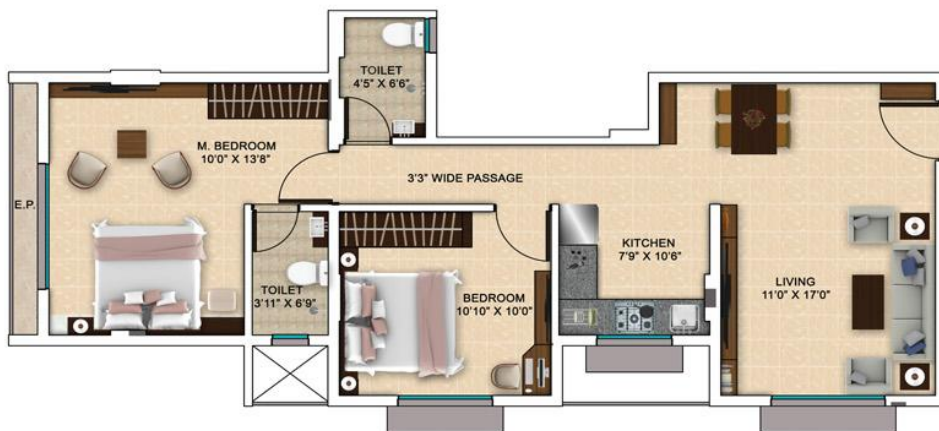
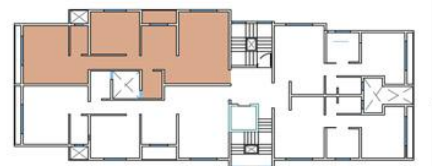




## TYPICAL FLOOR PLANS



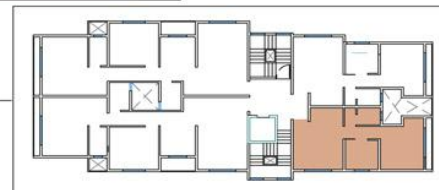
Type - 1



Type - 2



Type - 3



Type - 4





## Contemporary Amenities

Home Automation

Well Decorated  
Entrance Lobby

French Windows

Generator Backup

POP on Walls

Intercom  
Facilities

Fully Automatic  
Firefighting Lift

Earthquake Resistant  
RCC Structure

Planned Shaft for  
Electrical and  
Plumbing Lines

Multi Dish Unit

Glass Balcony

Video Door Phone

Designer  
Bathroom  
Fitting

Concealed Piping  
and Electrical Wiring

Fire Fighting  
System

CCTV

24x7 Security  
& On-Call Maintenance

Living Room

Kitchen

Bedroom

Bathroom



47/2 Serene Meadows, Anandvali, Gangapur Road, Nasik 422005.